



# QUICK START USER GUIDE



**C-00181 PYTHON  
1/8TH SCALE 4WD  
ELECTRIC READY TO RUN**

**[www.corally.com](http://www.corally.com)**

## INTRODUCTION

Thank you for purchasing a Team Corally car. This manual describes the instructions for using the model and the electronic components. You will also find some tips on how to maintain your RC model so that you can enjoy it for years to come. You have purchased one of the most efficient models available on the market that has been designed by a team of professionals. You will also benefit from the best after-sales support. All Team Corally models guarantee a high quality of manufacture and performance that guarantees you a high satisfaction of use and services provided by the Team Corally. Always take the time to read the instructions carefully in order to follow all the procedures to use your RC model safely for you and for other people and property in the area. This will allow you to take full advantage of all the performance of your RC model.

Please also check the website [www.corally.com/Downloads/](http://www.corally.com/Downloads/) to check if you have the latest version of this instruction manual. (Version: see bottom cover of this manual)

If you have any questions about the model and its components, you can send a message to [info@corally.com](mailto:info@corally.com)

We also recommend that you get help from an experienced model maker or your dealer.

You will find all the references of the spare parts on the website [www.corally.com](http://www.corally.com)

## TERM OF USE

The user is responsible for the use of your model. The user assumes all risks associated with the use of the model. This model is not intended for use by children under 14 years of age without the supervision of a responsible adult who is familiar with the dangers of using a RC model. Team Corally / JSP Group Intl bvba, its manufacturers, distributors and resellers cannot control the use and load of the model and therefore cannot be held responsible for any damage to property and damage caused to persons resulting from the use of this product. You must accept these conditions and consider yourself fully responsible for the use of this product. If not, do not use this product.

Due to the continuous development of our products, the exact specifications of the kit may vary. If you have a problem with your new kit, please contact the store where you purchased it, indicating the part number(s).

Team Corally / JSP Group Intl bvba reserves the right to change any specification without notice. All rights reserved.

## READ FIRST

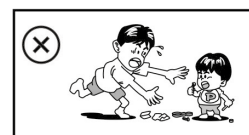
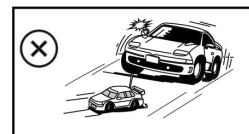
This owner's manual is designed for use with your vehicle and contains the instructions you will need to operate and maintain your vehicle.

- We know you want to start driving immediately after unpacking, but it is very important that you take the time to read this manual carefully, even if you are an experienced R/C driver.
- Read carefully and follow all instructions in this manual. Failure to comply with the instructions will be considered as abuse and/or negligence which may result in the cancellation of the warranty.
- Your vehicle is designed to operate on uneven terrain. However, dust, sand, water and carpet fibres can get into your car's workspaces and can damage your vehicle if they are not removed quickly. We do not guarantee any warranty on your vehicle against damage caused by external elements such as sand, dirt or water. Users are responsible for the maintenance and safe operation of this vehicle.
- This product is not a toy. It is not suitable for users under 14 years of age, unless they are supervised by adults.
- Never attempt to disassemble electronic components. These have been carefully calibrated at the factory.
- Only improve your car with parts made for your car. If you upgrade performance, replace the entire system (such as the motor, inverter, battery, etc.) so that all components are properly adapted. Any malfunction resulting from a custom modification will void your warranty.
- Before driving your vehicle, please read this manual in its entirety and examine your vehicle and radio control system for any defects.
- For better performance, some adjustments may be necessary.
- This vehicle requires a battery (included in the car or in the packaging). Make sure the vehicle's battery is sufficiently charged before driving, otherwise you may lose control of the vehicle.
- The radio transmitter requires 4 AA batteries (not included)
- Always remove or disconnect the battery from the vehicle to the inverter when not in use.
- Please drive your car in a spacious place. Never drive your car on the street or in traffic. Public places are subject to specific legislation by country, city, municipality, please comply with the legislation for the use of RC models in your region.
- This product is fully assembled in the factory. We accept no liability for damage and/or accidents resulting from custom modifications and/or malfunctions.

## USE PRECAUTIONS

Failure to operate your model in a safe and responsible manner may result in injury to yourself, others or damage to property around you.

- Do not use your model on public roads or in areas where you may encounter pedestrians or riders.
- Do not operate in a congested area or in crowds.
- Do not operate in areas where loud noises can disturb others, such as hospitals and residential areas.
- Do not operate your model with obstructed line of sight, at night or near water.
- Your model is radio controlled, it is subject to possible radio interference. Radio interference can cause loss of control of your model. Be careful.
- Take care not to injure yourself while using tools to adjust or upgrade your model.
- Since the model contains small parts, keep out of reach of children while assembling and/or disassembling your model.
- If your model becomes stuck against an object, release the throttle and retrieve it by hand
- Do not continue to apply the throttle when your model is stuck. This may damage the motor and/or ESC/Receiver unit.
- Turn OFF your model and don't use it if it runs erratically. Please do not use your model again until the problem has been solved.
- Keep the wheels of the model off the ground when checking the operation of the radio equipment.
- When learning to operate your model, go to an area that has no obstacles that can damage your model.
- Before and after each use, check all the screws on the model.
- To maintain the best performance, check that all moving parts move freely.



**Take all necessary precautions before, during and after using your model. You are responsible for the safe assembly, maintenance and use of your model.**

**In case of any questions, contact your local reseller or contact Team Corally support for assistance.**

## SAFETY PRECAUTIONS

For your safety, always use wear gloves and goggles when assembling and maintaining your model.

Always take all necessary precautions when handling products (silicone oil, grease, thread lock, cyanolyte glue, fuel) for the operation of the model. (Refer to the manufacturer's instructions)

For your safety, to keep the warranty and obtain the best performance, always use original CORALLY genuine parts.

Contains: LEAD (CAS 7439-92-1) ANTIMONY (CAS 7440-36-0)

**WARNING:** This product contains a chemical known to the state of California to cause cancer and birth defects or other reproductive harm.

**CAUTION: CANCER HAZARD**

Contains lead, a listed carcinogen. Lead is harmful if ingested. Wash thoroughly after using.

**DO NOT** use product while eating, drinking or smoking.

If material defects or manufacturing faults should arise in a product distributed or manufactured by Team Corally / JSP Group Intl bvba, and purchased by a consumer, we Team Corally / JSP Group Intl bvba acknowledge the obligation to correct those faults or defects within the limitations described below. This manufacturers warranty is in addition to, and does not affect, the legal or contractual rights of the consumer which arise from the purchase of such products. Team Corally / JSP Group Intl bvba guarantees the consumer that its products are free from material, manufacturing, and construction faults, as determined by the general state of knowledge and technology valid at the time of manufacturing. The fault responsible for causing the damage must be proven to have been present in the product at this time. Claims for compensation arising from consequential damage or product liability will not be considered valid unless they fall under peremptory provisions of the law. If material defects or manufacturing faults should arise in a product distributed or manufactured by Team Corally / JSP Group Intl bvba in the European community (EC) and purchased by a consumer, then Team Corally / JSP Group Intl bvba undertakes to correct those defects within the limitations described below. This manufacturer's declaration does not affect the consumer's legal or contractual rights regarding defects arising from the purchase contract between the consumer and the dealer or reseller. Extend of the Warranty

If a claim is made under warranty, we take at our discretion to repair or replace the defective goods. We will not consider supplementary claims, especially for reimbursement of costs relating to the defect (e.g. installation / removal costs) and compensation for consequent damages unless they are allowed by statute. This does not affect claims on legal regulations, especially according to the product liability law.

### **Provisions of the Warranty**

The purchaser is required to make the warranty claim in writing, and must enclose original proof of purchase (e.g. invoice, receipt, delivery note) and the appropriate warranty card. He must send the defective goods to our local representatives or directly to Team Corally / JSP Group Intl bvba, Geelseweg 80, 2250 Olen, Belgium at his own risk and cost.

The purchaser should state the material defect or manufacturing fault, or symptoms of the fault, as accurate as possible, so that we can check if our warranty obligation is applicable. The goods are transported from the consumer to us, and from us to the consumer, entirely at the risk and cost of the consumer.

### **Invalidation of the Warranty**

The consumer cannot make a claim under warranty when the fault is affecting the use of the product arising from natural wear, competition use, or improper use (including installation) or external forces. The consumer's adherence to the building and operating instructions relevant to the model, including the installation, operation, use of, and maintenance of, model-related components cannot be supervised by Team Corally / JSP Group Intl bvba. Therefore Team Corally / JSP Group Intl bvba is in no way liable for loss, damage, or costs resulting from improper use, or behaviour in any way connected to the above described provisions. Unless otherwise required by law, Team Corally / JSP Group Intl bvba is in no way whatever liable to provide compensation for damages arising from the improper use of the model (including personal injury, death, damage to buildings, loss of turnover, loss of business, or interruption of business, or any other direct, or indirectly caused, consequential damage).

### **Duration of Validity**

The claim period is 24 months from the date of purchase of the product by the consumer from a dealer in the European Community (EC) counted from the date of purchase. The claim period is 12 months from the date of purchase of the product by the consumer from a dealer outside the European Community (EC) counted from the date of purchase. If a defect arises after the end of the claim period, or if evidence or documents required according to this declaration in order to make the claim valid are not presented until after this period, then the consumer forfeits any rights or claims from this declaration. The guarantee period is not prolonged by the granting of any claims within the framework of this warranty, especially in the case of repair or replacement. The guarantee period also does not restart in such cases.

### **Warranty Expiration**

If we do not acknowledge the validity of a claim based on this declaration within the claim period, all claims based on this declaration will expire after six months from the time of registering the claim; however this cannot occur prior to the end of the claim period.

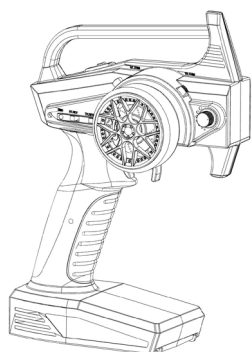
For any support, you can contact us by email at [info@corally.com](mailto:info@corally.com)



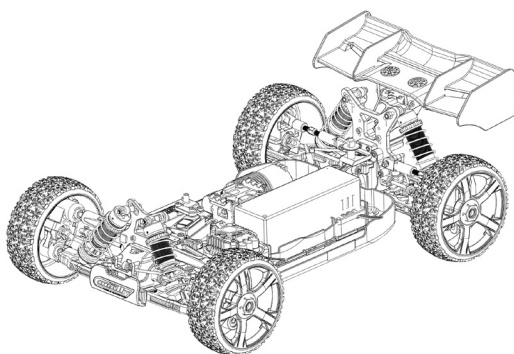
## LIPO BATTERY SAFETY PRECAUTIONS

- Follow and respect the manufacturer's instructions for use
- It is important to check that your ESC is set to LIPO if you are using a LIPO battery. Failure to comply with this instruction will result in increased battery discharge and may cause fire and damage to persons and property.
- When charging or storing LiPo batteries always use LiPo Safety Bag (Flame retardant).
- Always respect the maximum rate and voltage specified by the battery manufacturer.
- Charge the LIPO battery outdoors or in a ventilated area away from flammable objects and surfaces.
- NEVER leave your LiPo battery unattended while charging.
- If the battery swells during charging, stop charging immediately and disconnect the battery from the charger. Leave the battery outside for a few hours and observe. Then recycle the battery according to the instructions of your country/region. Never dispose of a LIPO battery with domestic waste.
- Before recycling your defective battery, it must be neutralized. Take a plastic container, fill it with water and add a lot of salt until the water becomes opaque. Place the LIPO battery in the water and leave for 24 hours. Check with a voltmeter that the voltage is 0.0V. Then recycle the battery according to local regulations.
- Never charge a damaged or inflated battery.
- Never discharge the battery cells below 3.2V.
- Always use the appropriate balancer/charger when charging your LiPo battery pack.
- When the battery is empty, check the temperature of the battery before charging it.  
If the battery is very hot, wait until it cools before charging it.
- Never charge a very hot battery as this may cause an explosion or fire.
- When the battery is empty, recharge it immediately. Do not store an empty battery, the battery will continue to discharge, it will fall below the minimum voltage and become unusable.

## KIT CONTENT (Depends on the selected model)



Transmitter



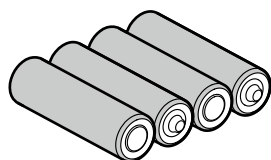
RTR Model (Chassis with Body)



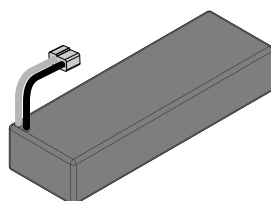
[www.corally.com/Downloads/](http://www.corally.com/Downloads/)

User Guide

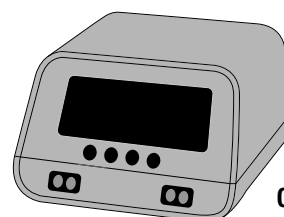
## REQUIRED FOR OPERATION (Not included)



4x AA Batteries  
for the Transmitter

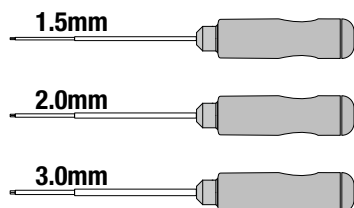


4S - 14.8V LiPo Battery

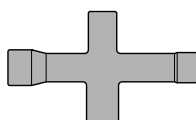


Charger

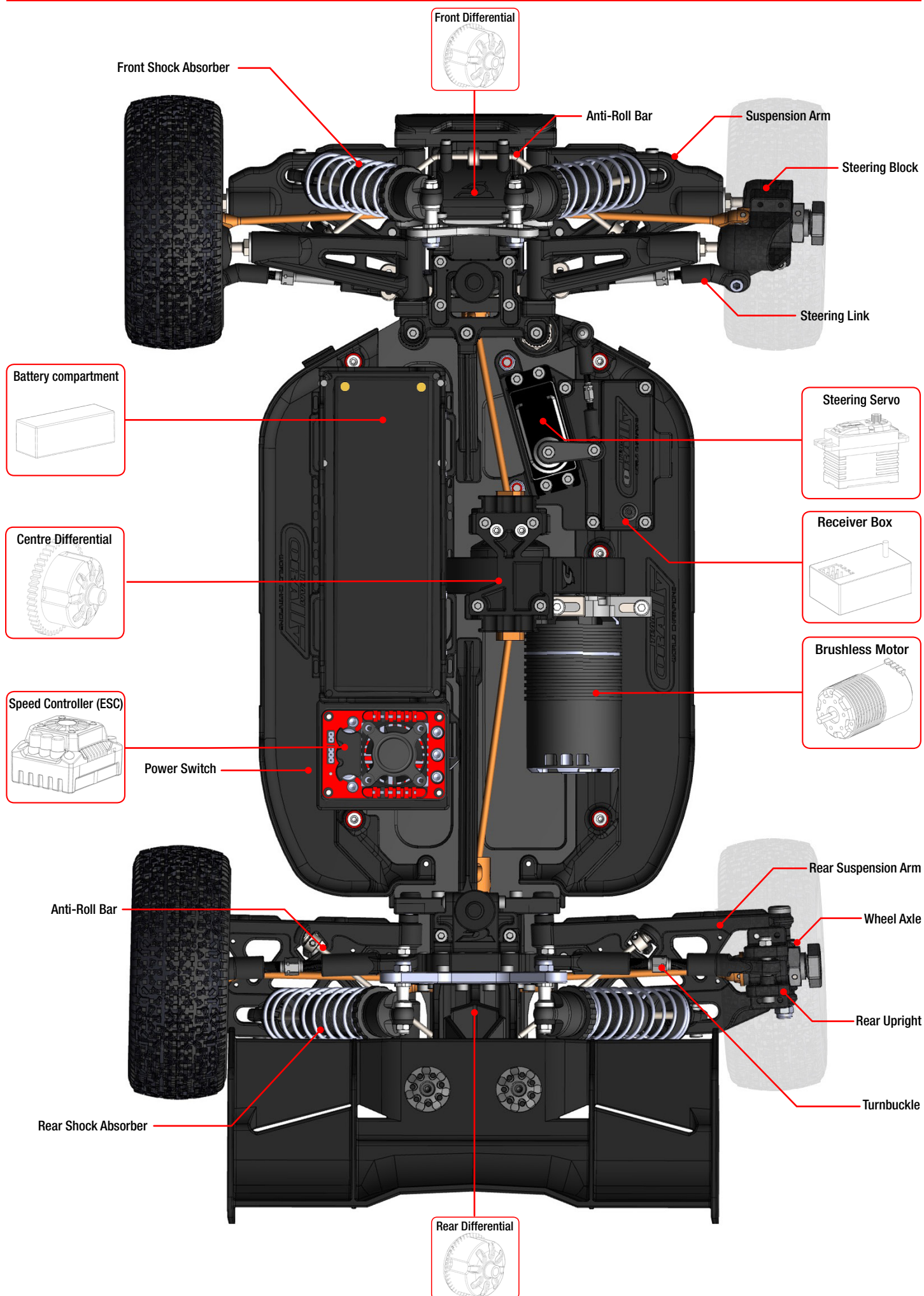
Hex Drivers



Cross Wrench



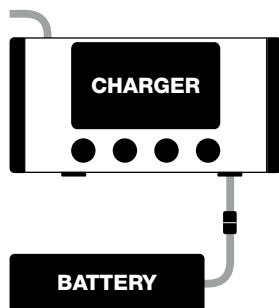
Silicone Oil  
(for maintenance)



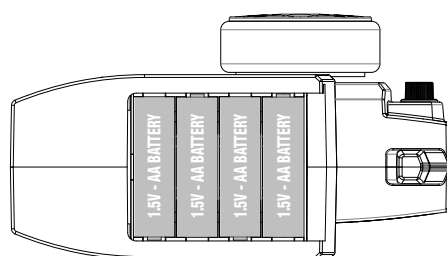
## READ THE INSTRUCTIONS



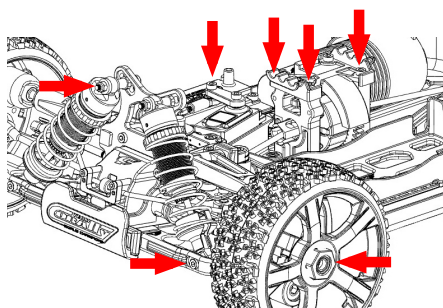
## CHARGE THE BATTERY



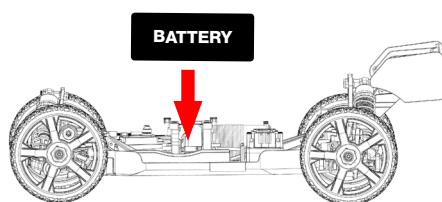
## INSTALL 4x AA BATTERY



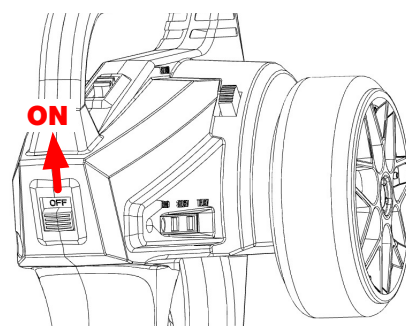
## MAKE SURE THAT ALL SCREWS AND NUTS ARE TIGHTENED PROPERLY.



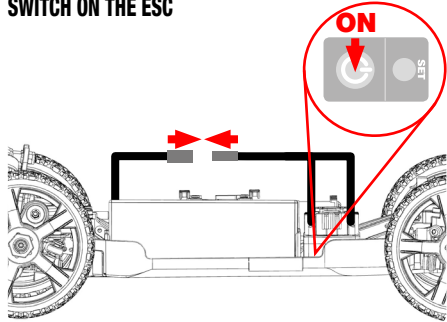
## INSTALL THE BATTERY



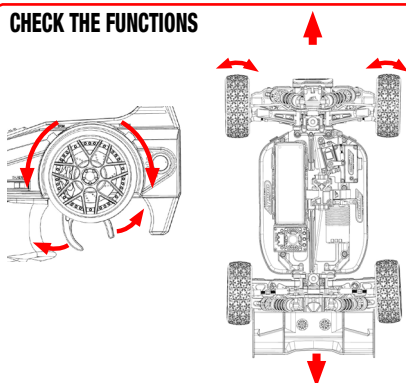
## TURN ON THE TRANSMITTER (Always First)



## CONNECT THE BATTERY TO THE ESC SWITCH ON THE ESC



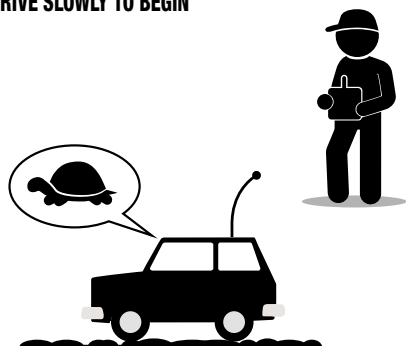
## CHECK THE FUNCTIONS



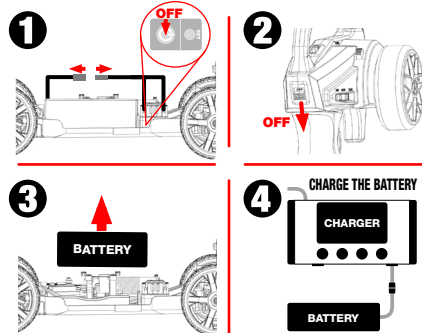
## CHECK THE RADIO SYSTEM RANGE



## DRIVE SLOWLY TO BEGIN



## WHEN FINISHING



## CLEAN AND MAINTAIN YOUR VEHICLE

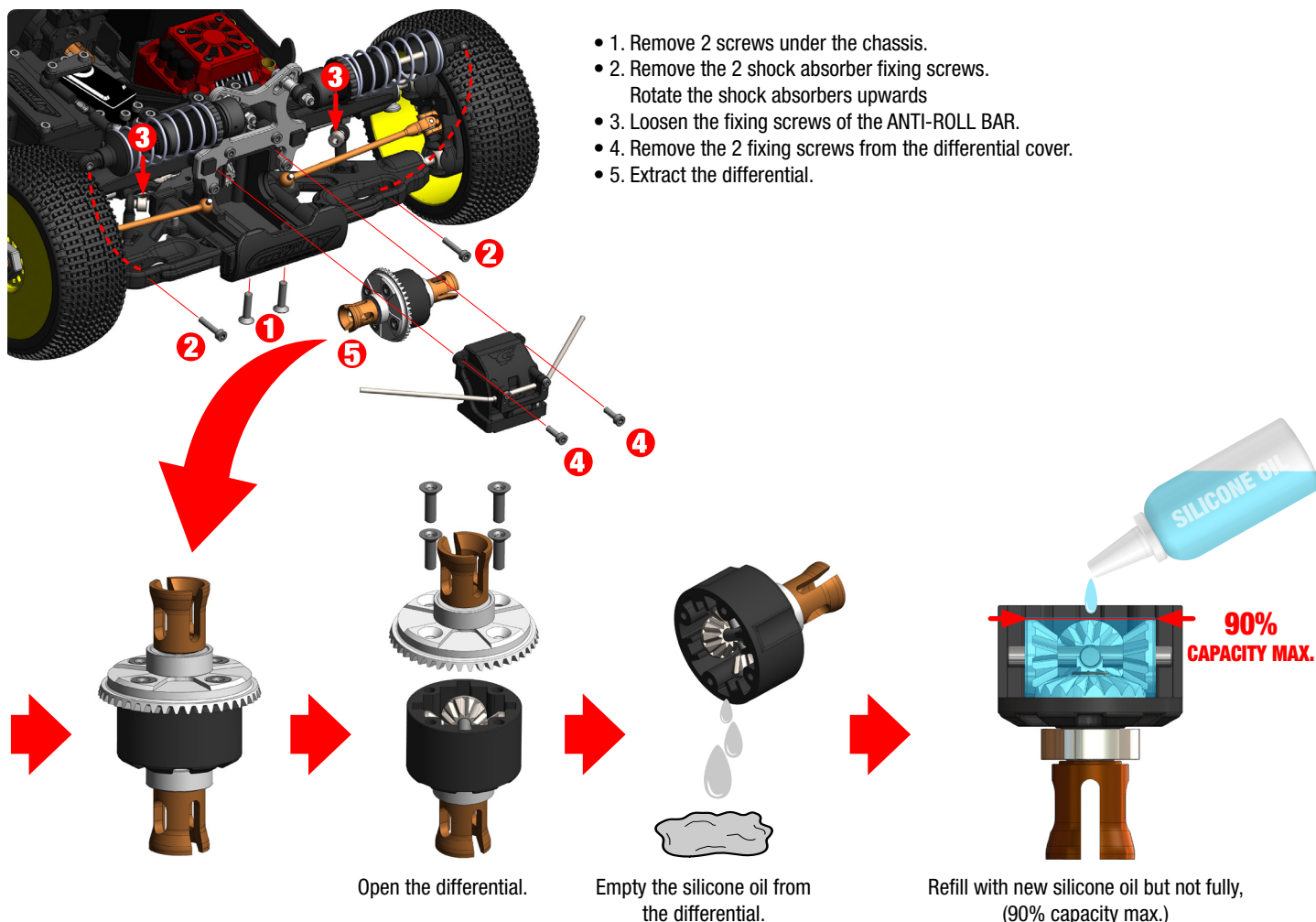




## MAINTENANCE

### DIFFERENTIAL MAINTENANCE

It may be necessary to replace the silicone oil every 50 runs.  
It depends on how you drive and the type of terrain you drive on.



Make the same maintenance operations for the central differential and the rear differential.

Fill the differentials with new silicone oil. **Never use any other type of oil.**

Use **7500cps** silicone oil for **FRONT**.

Use **5000cps** silicone oil for **CENTRE**.

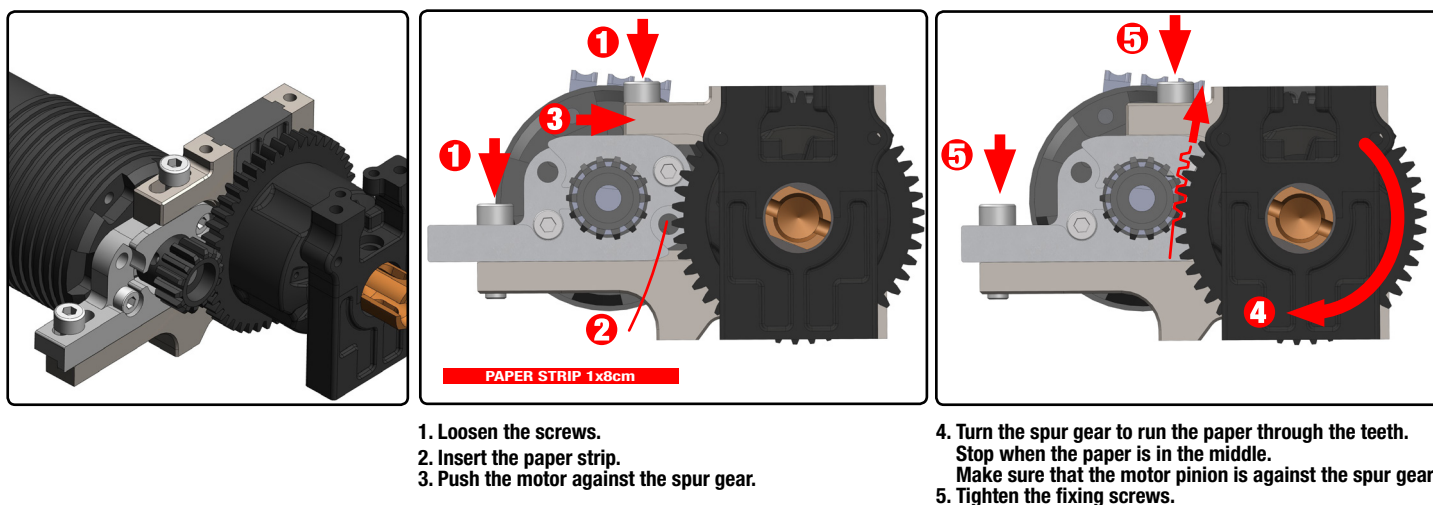
Use **3000cps** silicone oil for **REAR**.

[www.corally.com/Chemicals/Silicone-Oils/](http://www.corally.com/Chemicals/Silicone-Oils/)



### GEAR MESH ADJUSTMENT

If the gear mesh is not correct, you wear out the spur gear prematurely, the transmission will make noise, give unnecessary load on the motor (higher consumption, heating of the transmission).

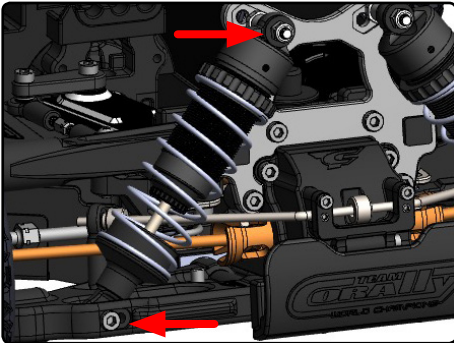




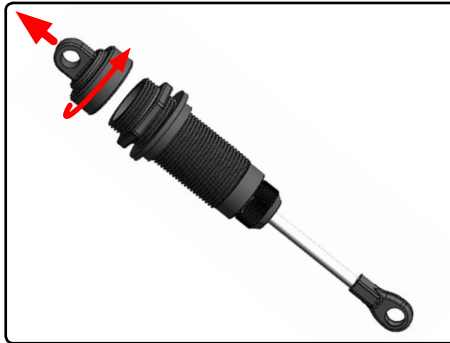
## MAINTENANCE

### SHOCK ABSORBER MAINTENANCE

It may be necessary to replace the silicone oil in the shock absorbers every 40 runs. It depends on how you drive and the type of terrain you drive on.



Remove the shock absorbers from the vehicle. (4x)



Remove the shock cap.



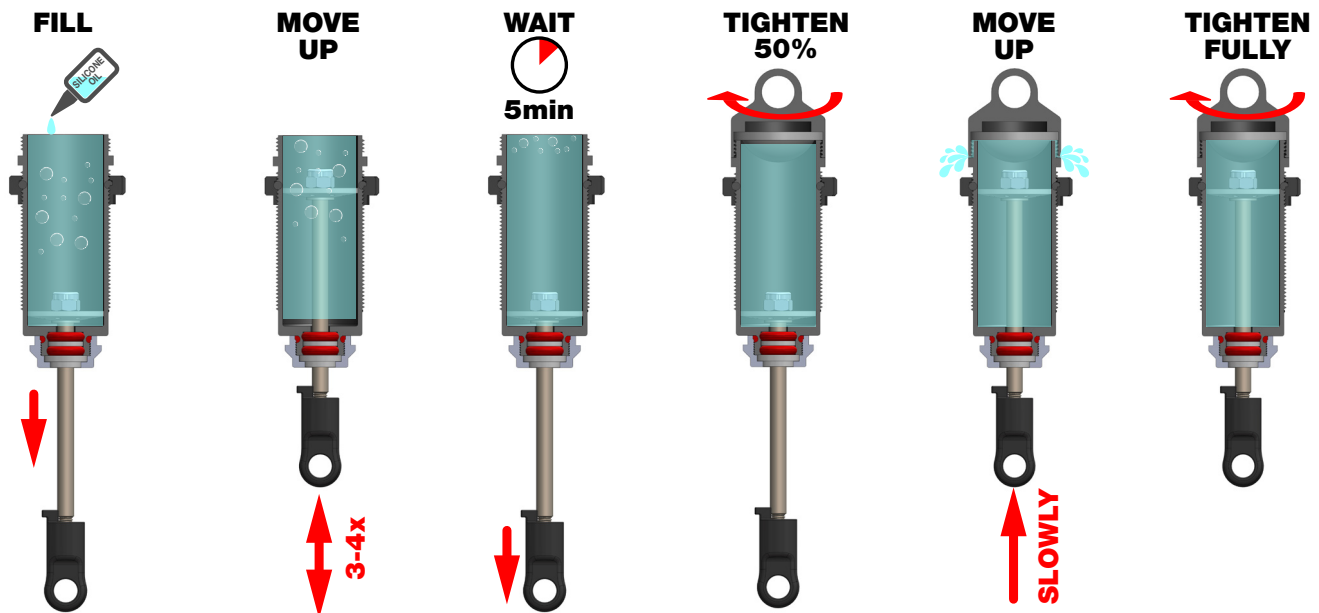
Drain the oil from the shock absorber.

Fill the shock absorbers with new silicone oil. **Never use any other type of oil.**

Use **450cps** silicone oil for **FRONT**

Use **400cps** silicone oil for **REAR**

[www.corally.com/Chemicals/Silicone-Oils/](http://www.corally.com/Chemicals/Silicone-Oils/)



- Pull the Shock shaft down.
- Fill the shock body with silicone oil.
- **Front : 450cps**  
**Rear : 400cps**

- Move the piston up&down (3-4x) to release the air bubbles in the silicone oil.

- Pull the Shock shaft down.
- Install the shock absorber vertically and let it sit for a few minutes until the bubbles rise to the surface.

- Install the silicone membrane in the shock cap.
- Tighten slightly the shock cap on the shock body.
- A little oil will flow out of the shock absorber.

- Gently move the piston in upper position.
- The excess will flow out of the shock absorber.

- Allow the piston in the upper position.
- Tighten the cap fully but not too much otherwise the membrane will be deformed.



## REAR DRIVE TRAIN - EXPLODED VIEW







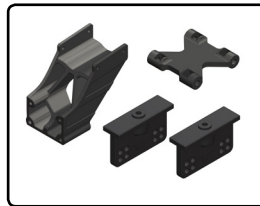
**SEE SPARE PARTS AT**



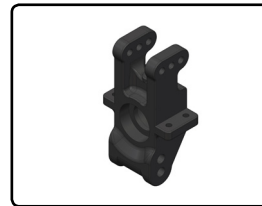
**www.corally.com**



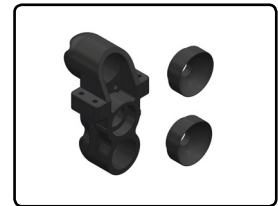
C-00180-004  
Battery - ESC Tray - Composite  
- 1 pc



C-00180-005  
Wing Mount - Adjustable -  
Composite - 1 Set



C-00180-008  
Hub - Rear - Composite - 1 pc



C-00180-009  
Steering Block - Pillow Ball Cup  
(2) - Front - Composite - 1 set



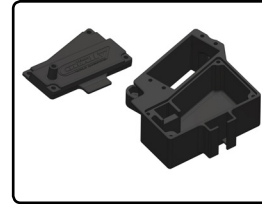
C-00180-010  
Suspension Arm - Lower - Rear  
- Composite - 1 pc



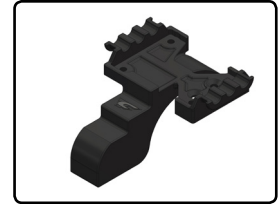
C-00180-011  
Suspension Arm - Upper - Front  
- Composite - 1 pc



C-00180-012  
Suspension Arm - Lower - Front  
- Composite - 1 pc



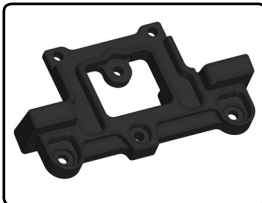
C-00180-013  
Servo Mount - Receiver Box -  
Composite - 1 Set



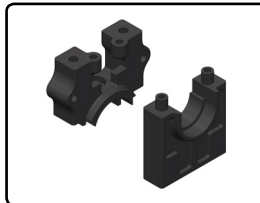
C-00180-015  
Center Diff Plate - Spur Gear  
Cover - Composite - 1 pc



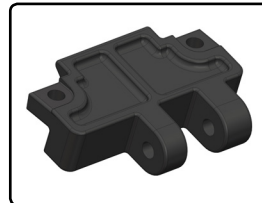
C-00180-016  
Chassis Brace - Rear - Com-  
posite - 1 pc



C-00180-017  
Arm Holder - Steering Deck -  
Composite - 1 pc



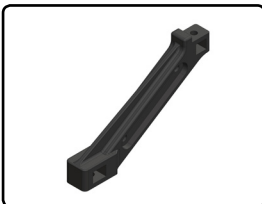
C-00180-018  
Centre Diff Bulkhead - Compos-  
ite - 1 Set



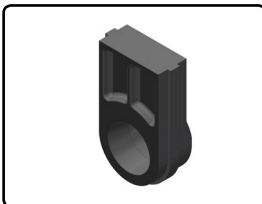
C-00180-020  
Gearbox Brace Mount A - Rear -  
Composite - 1 pc



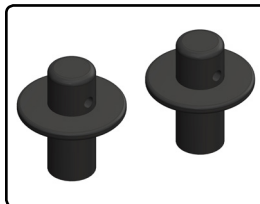
C-00180-021  
Gearbox Brace Mount Stiffener  
- Composite - 1 pc



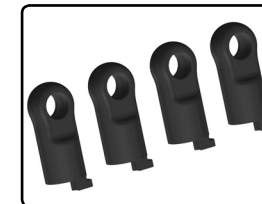
C-00180-022  
Chassis Brace - Front - Com-  
posite - 1 pc



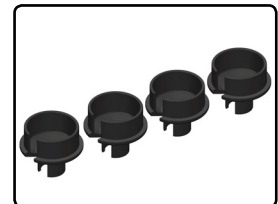
C-00180-023  
Motor Mount Centre Diff Insert -  
Composite - 1 pc



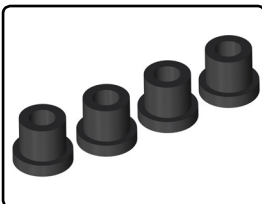
C-00180-024  
Body Post - Composite - 2 pcs



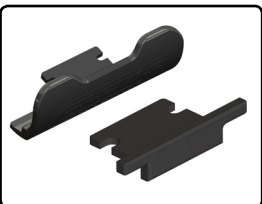
C-00180-027  
Body Post - Composite - 2 pcs



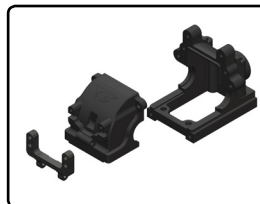
C-00180-029  
Shock Spring Cup - Composite  
- 4 pcs



C-00180-030  
Shock Bushing - Composite -  
4 pcs



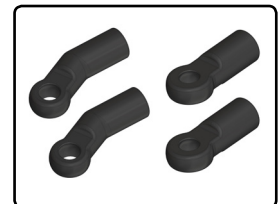
C-00180-032  
Bumper - Front - Rear - Com-  
posite - 1 set



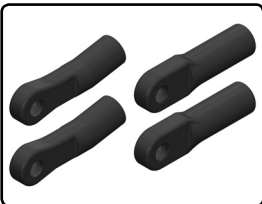
C-00180-033  
Bumper - Front - Rear - Com-  
posite - 1 set



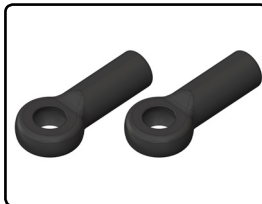
C-00180-036  
Bumper - Front - Rear - Com-  
posite - 1 set



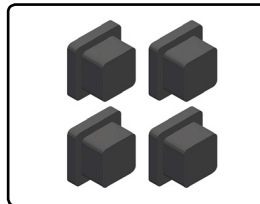
C-00180-039  
Steering Ball Cups - Composite  
- 1 set



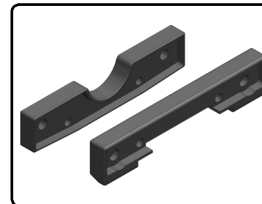
C-00180-041  
Rear Camber Ball Cups - Outer  
- Inner - 1 set



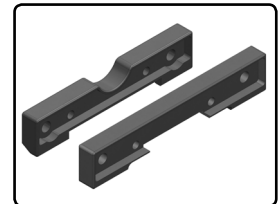
C-00180-044  
Ball Joint 6mm - Composite -  
2 pcs



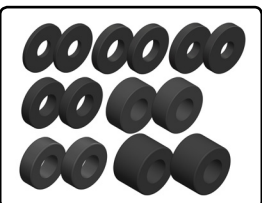
C-00180-048  
Bushings Set - 0 Deg -  
Composite - 1 Set



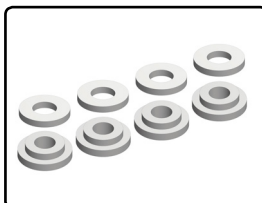
C-00180-051  
Suspension Arm Mount - Front -  
Composite - 1 Set



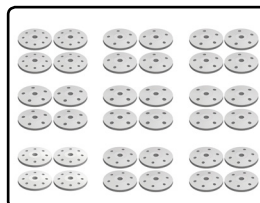
C-00180-052  
Suspension Arm Mount - Rear -  
Composite - 1 Set



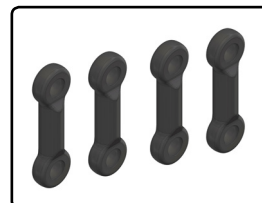
C-00180-055  
Suspension Arm Shim - Com-  
posite - 1 Set



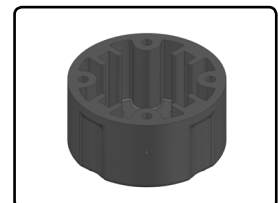
C-00180-078  
Shock Body Insert - Washer -  
Composite - 1 set



C-00180-080  
Shock Piston - Composite - 9  
versions - 4 pcs/type

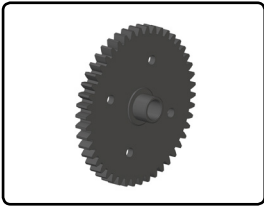


C-00180-089  
Anti-Roll Bar Ball Cups - Com-  
posite - 4 pcs

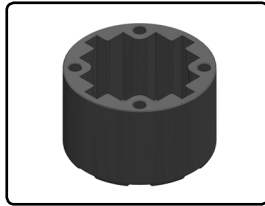


C-00180-090  
Diff Case - Centre - Composite  
- 1 pc

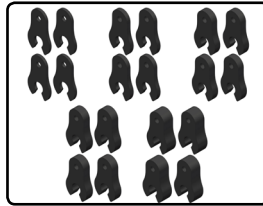
## SPARE PARTS



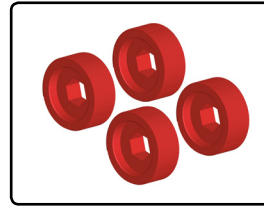
C-00180-091  
Spur Gear 46T - Steel - 1 pc



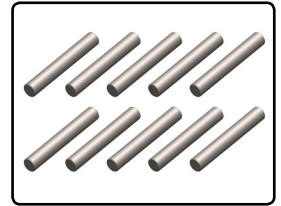
C-00180-098  
Diff Case - FR-RE - Composite - 1 pc



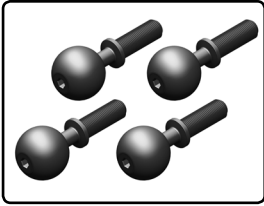
C-00180-109  
Caster Clips Set - 1 to 4.5mm - 1 Set



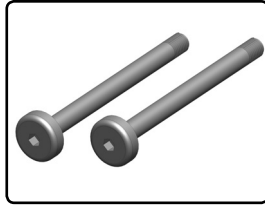
C-00180-117  
Pivot Ball Adjusting Nut - Aluminium - 4 pcs



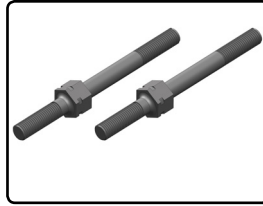
C-00180-122  
Pin 2.5x17mm - Steel - 10 pcs



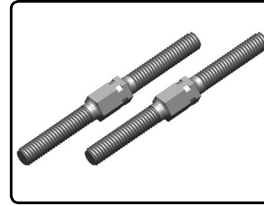
C-00180-123  
Pivot Ball - Steel - 4 pcs



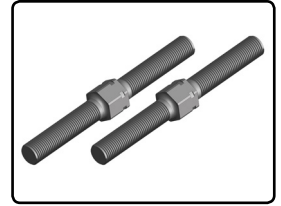
C-00180-127  
Hinge Pin - Outer - Steel - 2 pcs



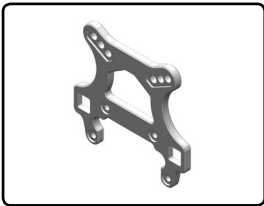
C-00180-128  
Turnbuckle - M4 - 50mm - Steel - 2 pcs



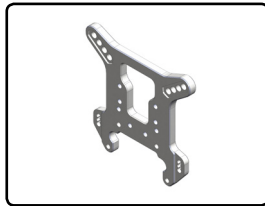
C-00180-129  
Turnbuckle - M3 - 35mm - Steel - 2 pcs



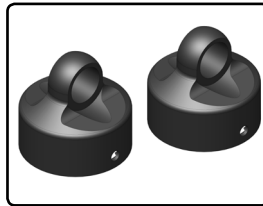
C-00180-130  
Turnbuckle - M5 - 50mm - Steel - 2 pcs



C-00180-131  
Shock Tower - 4mm - Aluminium - Front - 1 pc



C-00180-132  
Shock Tower - 5mm - Aluminium - Rear - 1 pc



C-00180-133  
Shock Cap - Aluminium - Hard Anodised - 2 pcs



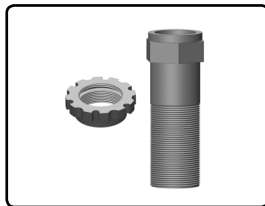
C-00180-134  
Shock Body - Rear - Aluminium - Hard Anodised - 1 pc



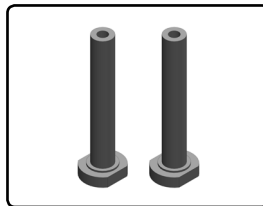
C-00180-135  
Shock Body - Front - Aluminium - Hard Anodised - 1 pc



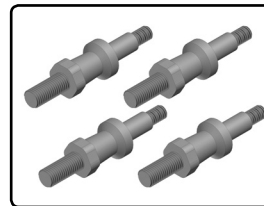
C-00180-136  
Shock Collar - Aluminium - Hard Anodised - 2 pcs



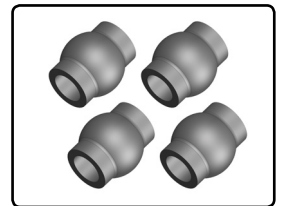
C-00180-145  
Servo Saver Shaft w/ Nut - Aluminium - 1 pc



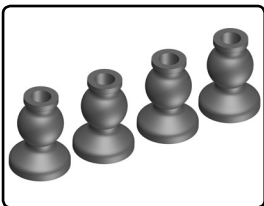
C-00180-147  
Servo Saver Post - Steel - 2 pcs



C-00180-148  
Shock Screw - Steel - 4 pcs



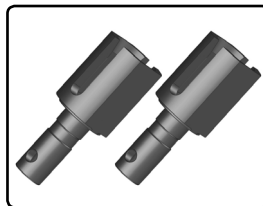
C-00180-149  
Ball - 5.8mm - Steel - 4 pcs



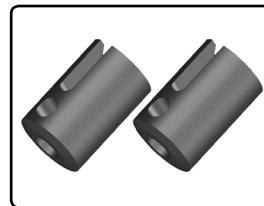
C-00180-150  
Ball Shouldered - 6.8mm - Steel - 4 pcs



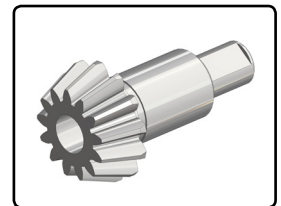
C-00180-153-1  
Diff. Outdrive Cup - Steel - 2 pcs



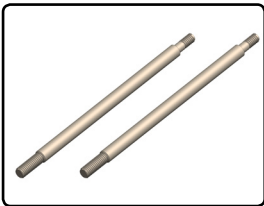
C-00180-154-1  
Center Diff. Outdrive Cup - Steel - 2 pcs



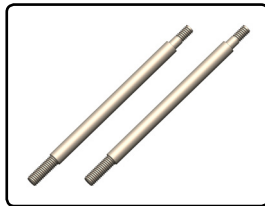
C-00180-155-1  
Pinion Outdrive Cup - Steel - 2 pcs



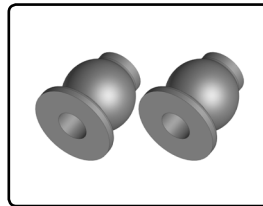
C-00180-156  
Bevel Pinion 13T - Steel - 1 pc



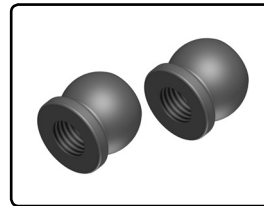
C-00180-164  
Shock Shaft - 66mm - Rear - Steel - 2 pcs



C-00180-165  
Shock Shaft - 55mm - Front - Steel - 2 pcs



C-00180-170  
Ball - 6.8mm - Steel - 2 pcs



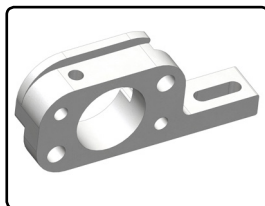
C-00180-171  
Threaded Ball - 6mm - Steel - 2 pcs



C-00180-175  
Steering Rack - Aluminium 7075 - 1 pc



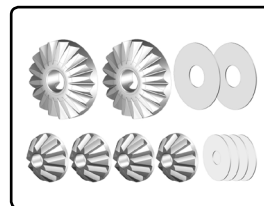
C-00180-176  
Motor Bulkhead - Aluminium - 1 pc



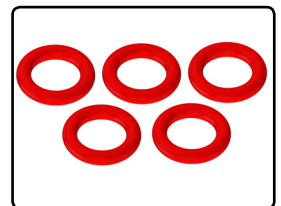
C-00180-177  
Motor Mount - Aluminium - 1 pc



C-00180-178  
Diff. Bevel Gear 43T - Steel - 1 pc

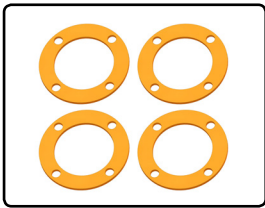


C-00180-179  
Planetary Diff. Gears - Steel - 1 Set

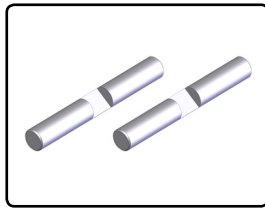


C-00180-182  
O-Ring - Silicone - 5x8mm - 5 pcs

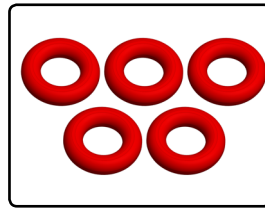
## SPARE PARTS



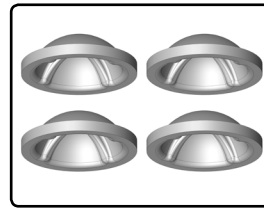
C-00180-183  
Diff. Gasket - 4 pcs



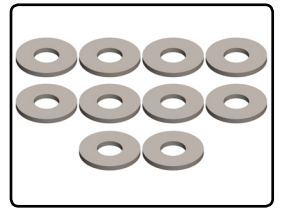
C-00180-184  
Gear Diff. Pin - Steel - 2 pcs



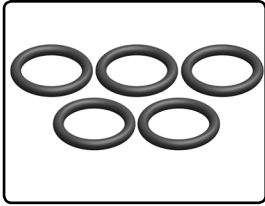
C-00180-188  
O-Ring - Silicone - 4x8mm - 5 pcs



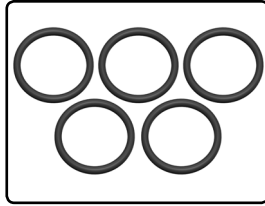
C-00180-189  
Shock Bladders - Silicone - 4 pcs



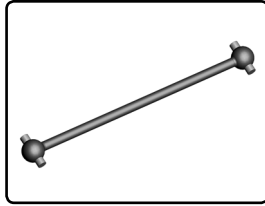
C-00180-190  
Shock Washer - 2.5x6x0.5mm - Steel - 10 pcs



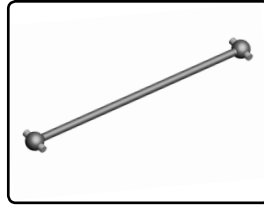
C-00180-191  
O-Ring - Silicone - 9x12mm - 5 pcs



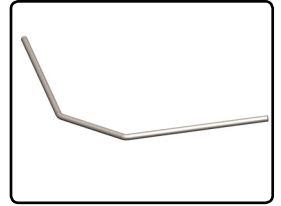
C-00180-192  
O-Ring - Silicone - 16.2x19.8mm - 5 pcs



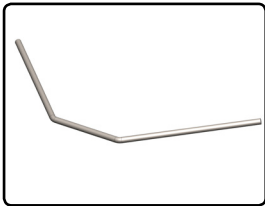
C-00180-193  
Drive Shaft - Center - Front - Steel - 1 pc



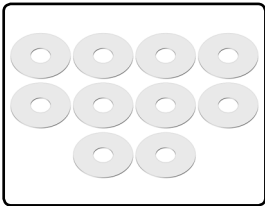
C-00180-194  
Drive Shaft - Center - Rear - Steel - 1 pc



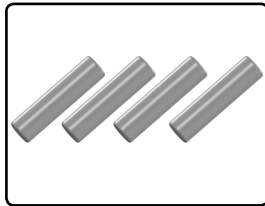
C-00180-197  
Anti-Roll Bar - 2.4mm - Front - 1 pc



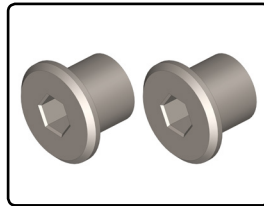
C-00180-200  
Anti-Roll Bar - 2.4mm - Rear - 1 pc



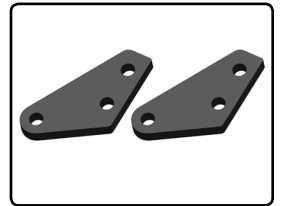
C-00180-204  
Shim Rings - 6x18x0.2mm - Steel - 10 pcs



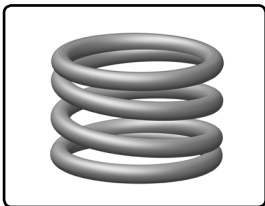
C-00180-205  
Diff. Outdrive Pin - 2x10mm - Steel - 4 pcs



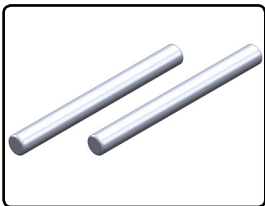
C-00180-206  
Steering Rack Bushing - Steel - 2 pcs



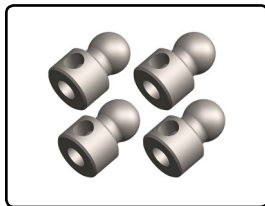
C-00180-207  
Steering Block Arms - Aluminium - 2 pcs



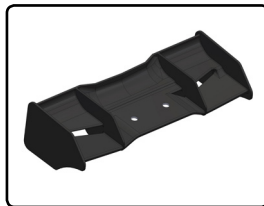
C-00180-216  
Servo Saver Spring - 1 pc



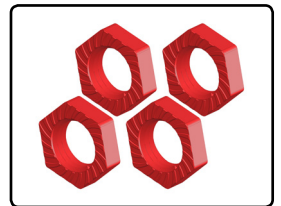
C-00180-219  
Suspension Arm Pivot Pin - Upper - Front - Steel - 2 pcs



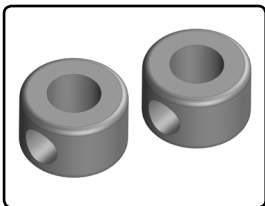
C-00180-220  
Ball End 5.8mm - for Anti Roll Bar - Steel - 4 pcs



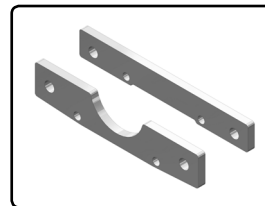
C-00180-226-B  
Wing - Composite - 1 pc



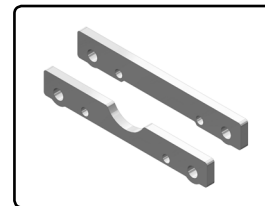
C-00180-230  
Wheel Nut - Aluminium - Ribbed - 4 pcs



C-00180-231  
Collar - for Anti-roll Bar - Aluminium - 1 pc



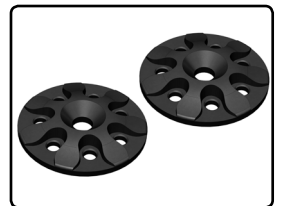
C-00180-238  
Suspension Arm Mount - Rear - Aluminium - 1 set



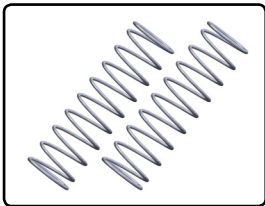
C-00180-240  
Suspension Arm Mount - Front - Aluminium - 1 Set



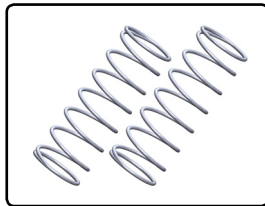
C-00180-242  
Side Guards - Left-Right - Composite - 1 Set



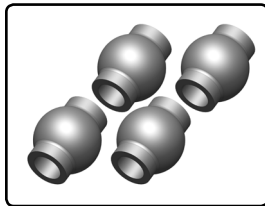
C-00180-251  
Wing Washer - Composite - 2 pcs



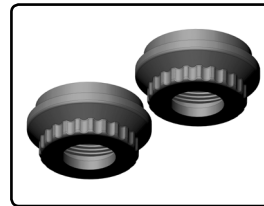
C-00180-287  
Shock Spring - Medium - Rear - 2 pcs



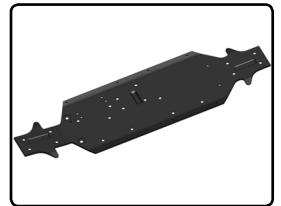
C-00180-290  
Shock Spring - Medium - Front - 2 pcs



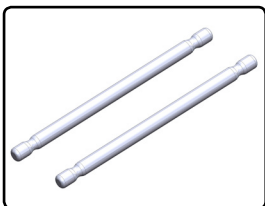
C-00180-293  
Ball 6.8mm - Steel - 4 pcs



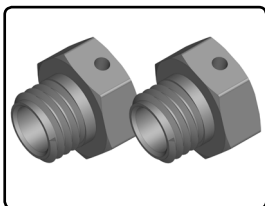
C-00180-316  
Shock Cap - Lower - Aluminium - 2 pcs



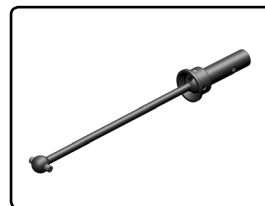
C-00180-321  
Chassis - Buggy XP RTR - Aluminium - 1 pc



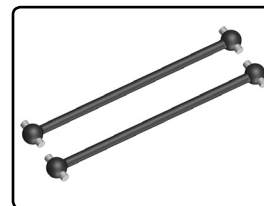
C-00180-322  
Suspension Arm Pivot Pin - Lower Inner - Fr/Re - Steel - 2 pcs



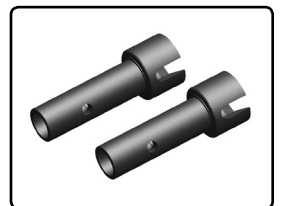
C-00180-329  
Wheel Hex Adapter - Wide RTR - Aluminium - 2 pcs



C-00180-360  
Universal Joint Drive Shaft - Buggy - Front - 1 pc

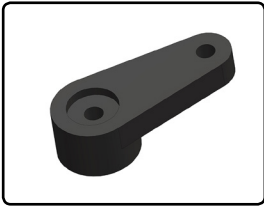


C-00180-369  
Universal Drive Shaft - Buggy - Rear - 1 pc



C-00180-370  
Wheel Drive Axle - Buggy - Rear - 2 pcs

## SPARE PARTS



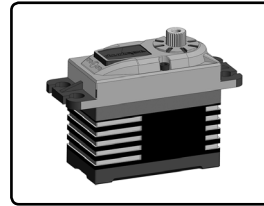
C-00180-372  
Servo Arm - Steering - Alu -  
1 pc



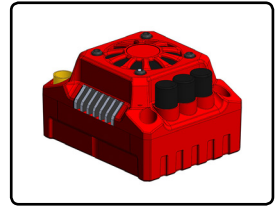
C-00180-375  
Painted Body - Buggy - 1 pc



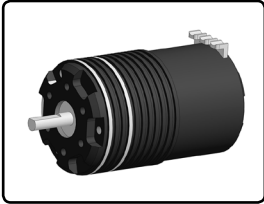
C-00180-376  
Racing Tires Glued on Rims -  
2 pcs



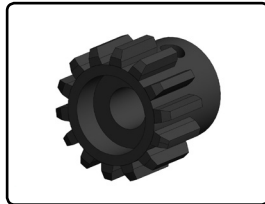
C-52021  
Digital Servo - CR-7220-MG  
- Low Voltage - Core Motor -  
Metal Gear - 20 Kg Torque



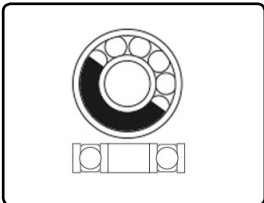
C-54011  
Speed Controller - TOROX 185 -  
Brushless - 2-6S



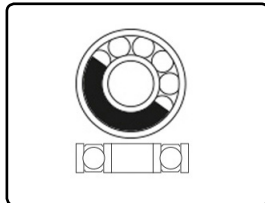
C-54055  
Electric Motor - Kuron 825 -  
4-Pole - 2050 KV - Brushless  
- Sensorless



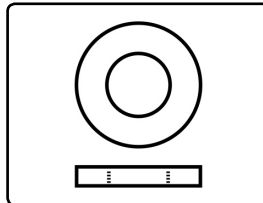
C-72713  
M1.0 Pinion - Hardened Steel -  
13 Teeth - Shaft Dia. 5mm



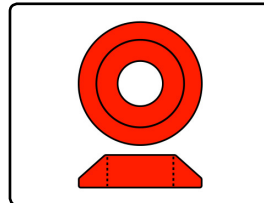
C-3611-2-06-10-03  
Ball Bearing - Abec 3  
6x10x3mm - 2 pcs



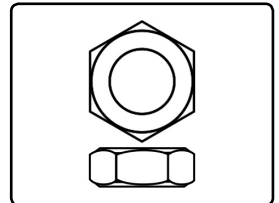
C-3611-4-08-16-05  
Ball Bearing - Abec 3  
8x16x5mm - 2 pcs



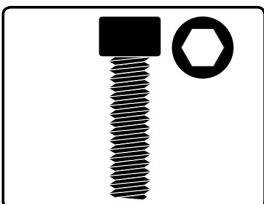
C-3201-60  
Steel Shim - M6 - 10 pcs



C-31205  
Aluminium Washer - for M3 Flat  
Head Screws - Red - 10 pcs



C-3104-40  
Steel Nut - Low Profile - M4 -  
10 pcs



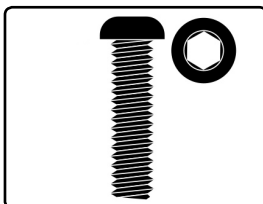
**SOCKET HEAD SCREWS - 10 PCS**

C-3001-25-10	M2.5x10
C-3001-25-20	M2.5x20
C-3001-30-06	M3x6
C-3001-30-08	M3x8
C-3001-30-10	M3x10
C-3001-30-12	M3x12
C-3001-30-14	M3x14
C-3001-30-16	M3x16
C-3001-30-20	M3x20
C-3001-30-25	M3x25
C-3001-30-30	M3x30
C-3001-40-08	M4x8



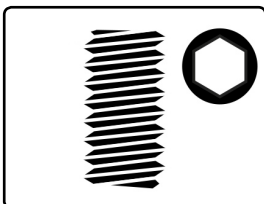
**FLAT HEAD SCREWS - 10 PCS**

C-3002-30-08	M3x8
C-3002-30-10	M3x10
C-3002-40-10	M4x10
C-3002-40-12	M4x12
C-3002-40-14	M4x14
C-3002-40-16	M4x16
C-3002-40-18	M4x18



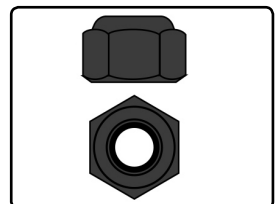
**BUTTON HEAD SCREWS - 10 PCS**

C-3003-30-06	M3x6
C-3003-30-10	M3x10
C-3003-30-12	M3x12
C-3003-30-16	M3x16
C-3003-40-12	M4x12



**SET SCREWS - 10 PCS**

C-3004-30-03	M3x3
C-3004-30-05	M3x5
C-3004-40-04	M4x4



**NYLSTOP NUT - 10 PCS**

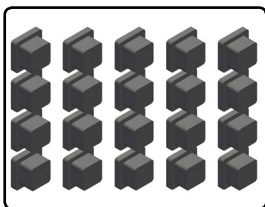
C-31001-25	M2.5
C-31001-30	M3
C-31001-40	M4



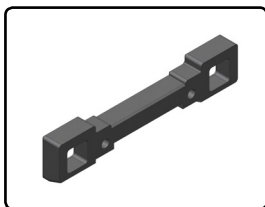
[www.corally.com](http://www.corally.com)



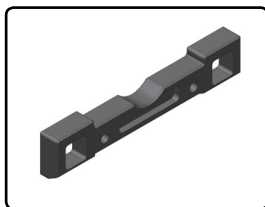
## OPTION PARTS



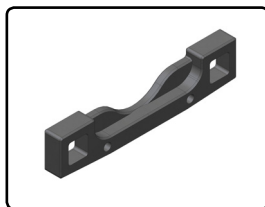
C-00180-046  
Eccentric Bushings Set -  
Composite - 1 Set



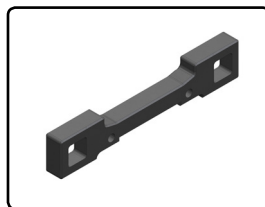
C-00180-139  
Suspension Arm Mount PRO -  
FR-FR - Aluminum 7075 - 1 pc



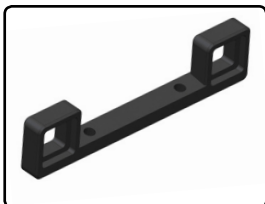
C-00180-140  
Suspension Arm Mount PRO -  
FR-RE - Aluminum 7075 - 1 pc



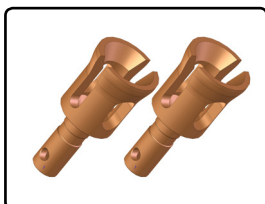
C-00180-141  
Suspension Arm Mount PRO -  
RE-FR - Aluminum 7075 - 1 pc



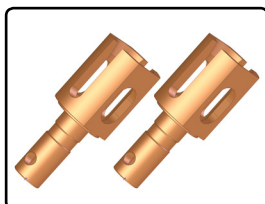
C-00180-142  
Suspension Arm Mount PRO -  
RE-RE - Aluminum 7075 - 1 pc



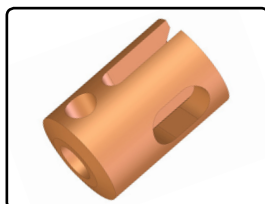
C-00180-152  
Susp. Arm Mount PRO - Front -  
Upper - Aluminum 7075 - 1 pc



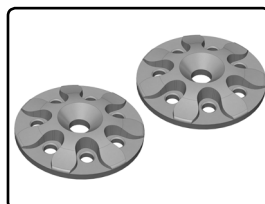
C-00180-153  
Diff. Outdrive Cup - Lightened -  
Steel - 2 pcs



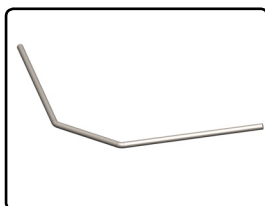
C-00180-154  
Centre Diff. Outdrive Cup -  
Lightened - Steel - 2 pcs



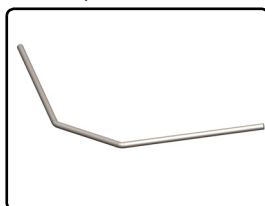
C-00180-155  
Pinion Outdrive Cup - Lightened -  
Steel - 1 pc



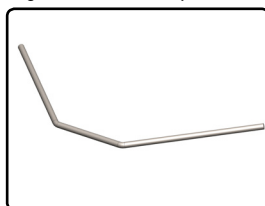
C-00180-157  
Wing Washer - Lightened -  
Aluminum - 2 pcs



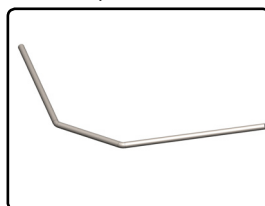
C-00180-195  
Anti-Roll Bar - 2.6mm - Front -  
1 pc



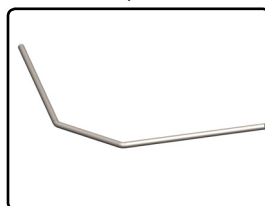
C-00180-196  
Anti-Roll Bar - 2.5mm - Front -  
1 pc



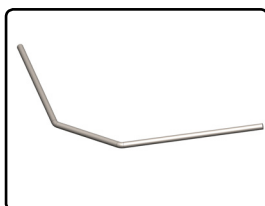
C-00180-198  
Anti-Roll Bar - 2.2mm - Front -  
1 pc



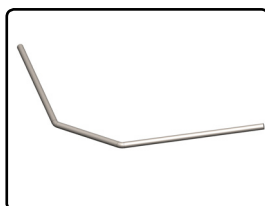
C-00180-199  
Anti-Roll Bar - 2.0mm - Front -  
1 pc



C-00180-201  
Anti-Roll Bar - 2.6mm - Rear -  
1 pc



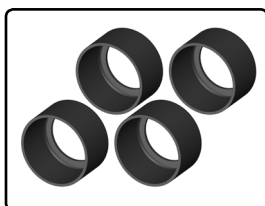
C-00180-202  
Anti-Roll Bar - 2.8mm - Rear -  
1 pc



C-00180-203  
Anti-Roll Bar - 3.0mm - Rear -  
1 pc



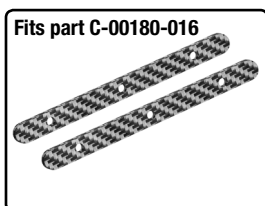
C-00180-224  
Fan Holder - Composite - 1 set



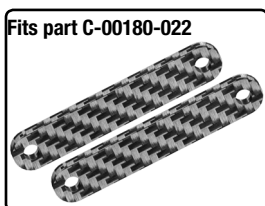
C-00180-250  
CVD Drive Shaft Cup - Alu. -  
4 pcs



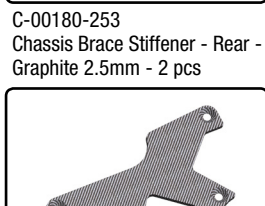
C-00180-252  
Spur Gear 46T - Lightweight -  
Steel - 1 pc



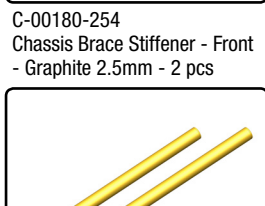
**Fits part C-00180-016**



**Fits part C-00180-022**



C-00180-253  
Chassis Brace Stiffener - Rear -  
Graphite 2.5mm - 2 pcs



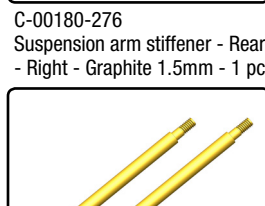
C-00180-254  
Chassis Brace Stiffener - Front -  
Graphite 2.5mm - 2 pcs



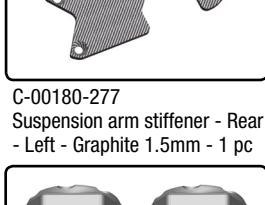
C-00180-266  
Servo Saver Steering Arm -  
Aluminium - 1 pc



C-00180-267  
Hub - Rear - Aluminium - 1 pc



C-00180-276  
Suspension arm stiffener - Rear -  
Right - Graphite 1.5mm - 1 pc



C-00180-277  
Suspension arm stiffener - Rear -  
Left - Graphite 1.5mm - 1 pc



C-00180-278  
Suspension Arm Pivot Pin -  
Lower Inner - FR/RE - TiNi - 2 pcs



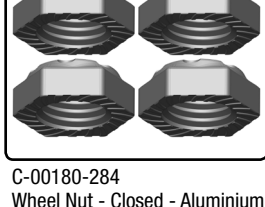
C-00180-279  
Suspension Arm Pivot Pin -  
Upper - Front - TiNi - 2 pcs



C-00180-280  
Shock Shaft - 66mm - Rear -  
TiNi - 2 pcs



C-00180-281  
Shock Shaft - 55mm - Front -  
TiNi - 2 pcs



C-00180-284  
Wheel Nut - Closed - Aluminium -  
4 pcs



C-00180-285  
Pivot Ball Adjusting Nut - Brass -  
4 pcs



C-00180-286  
Shock Spring - Soft - Rear -  
2 pcs

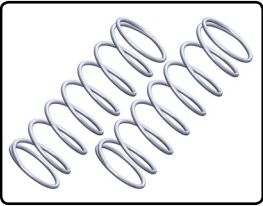


C-00180-288  
Shock Spring - Hard - Rear -  
2 pcs

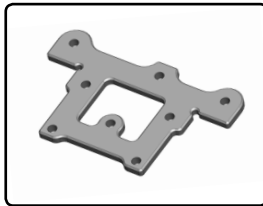


C-00180-289  
Shock Spring - Soft - Front -  
2 pcs

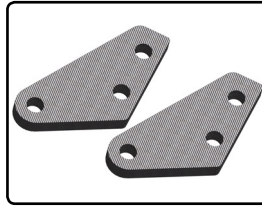
## OPTION PARTS



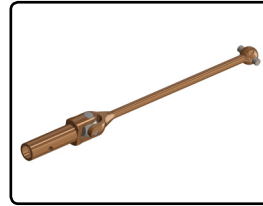
C-00180-291  
Shock Spring - Hard - Front  
- 2 pcs



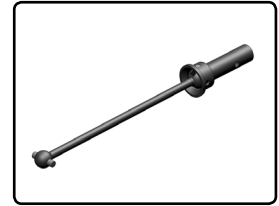
C-00180-292  
Steering Top Plate - Aluminium  
3mm - 1 pc



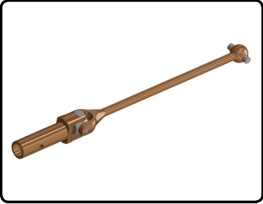
C-00180-315  
Steering Block Arms - Graphite  
2.5mm - 2 pcs



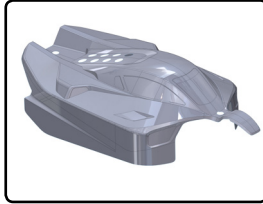
C-00180-361  
Universal Joint Drive Shaft -  
Buggy - Front - 1 pc



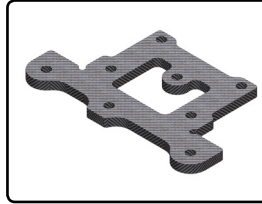
C-00180-365  
Universal Joint Drive Shaft -  
Buggy - Rear - 1 pc



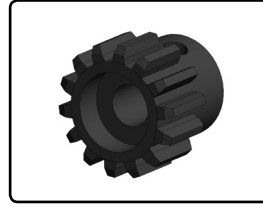
C-00180-366  
Universal Joint Drive Shaft -  
Buggy - Rear - 1 pc



C-00180-377  
Clear Body - Buggy - 1 pc



C-00180-003  
Steering Top Plate - Graphite  
2mm - 1 pc



C-72714  
M1.0 Pinion - Hardened Steel -  
14 Teeth - Shaft Dia. 5mm

## DECLARATION OF CONFORMITY

### EU-Konformitätserklärung/ Déclaration de Conformité UE

(in accordance with ISO/IEC 17050-1) / (in Übereinstimmung mit ISO/IEC 17050-1) /  
(Conformément à la norme ISO/IEC 17050-1)

Description : **1/8 PYTHON BUGGY 4WD - RTR**  
Item Number: **C-00181**

This declaration is issued under the sole responsibility of the manufacturer.  
Die alleinige Verantwortung für die Ausstellung dieser Erklärung trägt der Hersteller.  
La présente déclaration est établie sous la seule responsabilité du fabricant.

Product(s)/Produkt(e)/ Produit(s) : **1/8 SCALE BUGGY 4WD - RTR**

The object of declaration described above is in conformity with the relevant Union harmonization Legislation, specifically the requirements of the specifications listed below, following the provisions of the European RED Directive 2014/53/EU:  
Der Gegenstand dieser Erklärung ist konform mit den Harmonisierungsrechtsvorschriften der Europäischen Union, insbesondere mit den unten aufgeführten Bestimmungen, und folgt der europäischen RED Direktive 2014/53/EU:  
L'objet de la déclaration décrit ci-dessus est conforme à la législation pertinente en matière d'harmonisation de l'Union européenne, en particulier les exigences des spécifications énumérées ci-dessous, conformément aux dispositions des directives européennes RED 2014/53/EU:

EN 300 440 V2.1.1:2017

EN 301 489-3 V1.6.1:2013

EN 301 489-1 V2.1.1:2017

EN 60950-1:2006+A11:2009+A1:2010+A12:2011+A2:2013

EN 62479:2010

EN 55024:2010+A1:2015

EN 55032:2015

EN 61000-3-3:2013

EN 61000-3-2:2014

JSP GROUP INTL • Geelseweg, 80 • 2250 Olen • Belgium

Signed for and on behalf of/ Unterzeichnet für und im Namen von/ Signé pour et au nom de :

Place/Ort/Lieu and Date/Datum/Data : **Olen, Belgium, 21 June 2019**

Name/Nom: **Stefan Engelen**  
Title/Titel/Titre : **Ceo**

Signature/Unterschrift :





**WWW.CORALLY.COM**

Team Corally is a registered trademark licensed to  
JSP Group Intl bvba • Geelseweg 80 • B-2250 OLEN • Belgium  
Tel: +32 14 25 92 94 • [Info@corally.com](mailto:Info@corally.com)