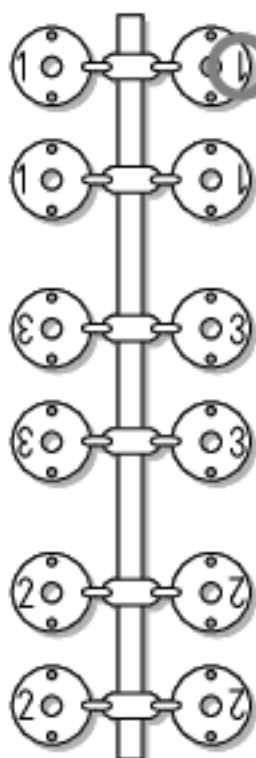


# NEW ASSOCIATED SHOCK PISTONS:

## PART NO. 6465



The shock pistons supplied are numbered #1, #2 and #3 so you can match them accurately to the shocks used on your kit according to the following tips:

❑ The #1 piston is the lightest damping and the #3 piston is the heaviest.

❑ Below are some starting points for the RC10L/10LSS, RC10c.e. & Team Car, and RC10T Truck:

### RC10L/10LSS:

#1 piston with Assoc. 20wt silicone oil.

### RC10c.e. & Team Car, front & rear:

#1 pistons with Assoc. 30wt silicone oil.

### RC10T Trucks, front:

#3 pistons with Assoc. 30wt silicone oil.

### RC10T Trucks, rear:

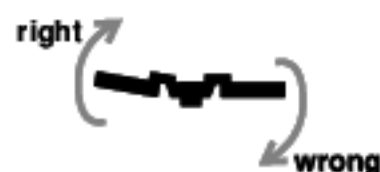
#2 pistons with Assoc. 30wt silicone oil.

(The #1 piston is also sold separately as #6464.)

❑ **Burrs** interfere with smooth shock action within the shock body.



To remove from tree without creating burrs, TWIST UP, not down:



❑ **Remove** any remaining burrs carefully with a sharp hobby knife.

