

For Immediate Release: June 20, 2023

#70023 Pro2 LT10SW Short Course Truck RTR, green
#70023C Pro2 LT10SW Short Course Truck RTR LiPo Combo, green



ELECTRIC ▫ OFF ROAD ▫ 1:10 SCALE ▫ 2 WHEEL DRIVE ▫ RTR

Short Course Racing--All the dirt, clay and pavement-racing excitement in a 1:10 scale RTR!

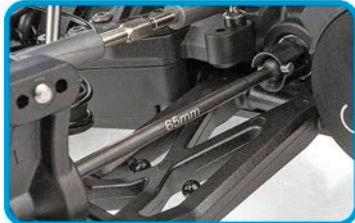
The Pro2 LT10SW short course truck is based on the 9-time ROAR Short Course National Championship-winning trucks, featuring a water-resistant high-power Reedy Power brushless speed control and 3300kV brushless motor, a 2.4GHz 2-channel radio system as well as our DVC (Dynamic Vehicle Control) receiver unit with built-in adjustable digital gyro. Add to that a Reedy Power metal-gear, digital high-torque servo and a water-resistant enclosed receiver box. All of this packaged together in an outstanding factory-finished green body. And to keep you sticking to the terrain, this LT10SW short wheelbase beast will keep you cornering with the included high-grip all-terrain tires and lightweight wheels. *The time for tearing up the track is now!*

Team Associated's new Pro2 LT10SW short course truck is a detailed and fun-to-drive Ready-to-Run RC truck. Based on our championship-winning Short Course truck, the Pro2 LT10SW features some of the latest features in racing. A durable lightweight aluminum top shaft, rugged steel turnbuckles and adjustable suspension geometry give the Pro2 LT10SW the ultimate in handling on all terrain. This makes it a perfect platform for short course racing!

The **#70023C LiPo Combo** has the added benefit of a Reedy Compact Balance Charger and Reedy LiPo battery pack included!

HIGHLIGHTS

PRO² LT10^{SW} SHORT WHEELBASE



65mm rear CVA drive shafts for reliability



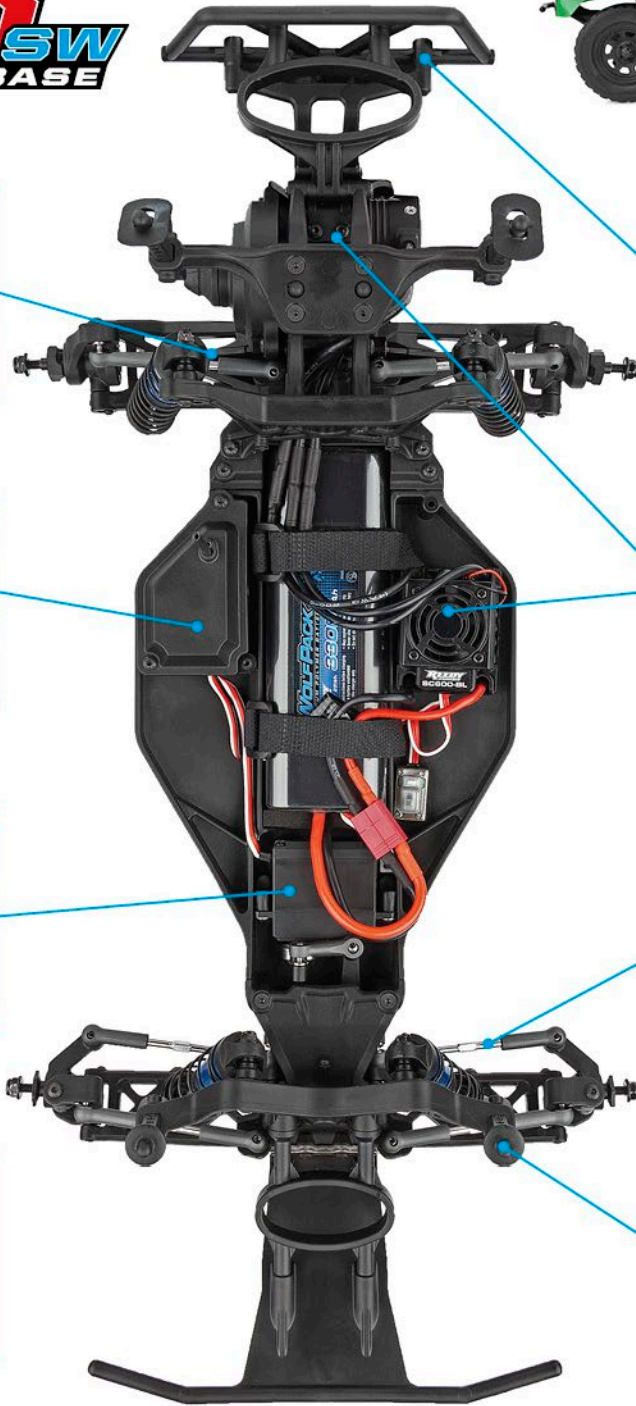
Water-resistant enclosed receiver box



High-torque, metal-gear Reedy servo with spring-style servo saver



Lightweight street stock-inspired wheels wrapped with high-grip all-terrain tires



Impact-resistant front and rear bumpers



Equipped with Reedy SC600-BL brushless ESC with T-plug connector and Reedy 3300kV sensorless brushless motor



Rugged steel turnbuckles for adjustable camber and front toe-in



Adjustable body mounts

Due to ongoing R&D, photos may not match final kit. Vehicle shown on these pages equipped with items NOT included in #70023: Reedy battery.

MORE FEATURES

- Durable and lightweight aluminum top shaft
- Low center-of-gravity molded composite chassis with hook-and-loop battery straps that accommodate both NiMH and 2S and 3S LiPo battery packs
- Metric hardware throughout
- 22 precision rubber-sealed ball bearings
- Impact-absorbing front and rear bumpers
- Adjustable body mounts
- Rear CVA drive shafts for more reliability
- Aluminum 12mm big bore coil-over shock absorbers
- 2.6:1 ratio gearbox with heavy-duty sealed gear differential and externally adjustable slipper clutch
- Rugged steel turnbuckles for adjustable camber and front toe-in
- Adjustable suspension geometry
- Vertical ball ends for roll center adjustments, front and rear

SPECIFICATIONS

Scale	1:10
Power	Electric
Length	492.4mm (19.38")
Width	252mm (9.92")
Weight	Varies
Wheelbase	227.8mm (10.94")
Transmission Ratio	2.6:1

ITEMS NEEDED TO COMPLETE

- **#70023, 70023C:** Four AA batteries for radio
- **#70023:** Suitable NiMH or 2S/3S LiPo battery for vehicle
- **#70023:** Charger suitable for chosen battery

[WATCH THE VIDEO!](#)



CATALOG INFORMATION

UPC	Part No.	Description	MSRP	Web	Available
784695700239	70023	Pro2 LT10SW Short Course Truck RTR, green	\$515.99	\$349.99	July 2023
784695983656	70023C	Pro2 LT10SW Short Course Truck RTR LiPo Combo, green	\$609.99	\$415.99	July 2023

COMPARISON CHART

Model version		Electronics Included			
Part No.	Description	Motor	Radio, Servo, ESC, Receiver	Charger	Battery
70023	Pro2 LT10SW Short Course Truck RTR, green	brushless	included	none	none
70023C	Pro2 LT10SW Short Course Truck RTR LiPo Combo, green	brushless	included	included	LiPo

Download all zipped photos here: <https://tinyurl.com/asc70023zip> (6.7MB). Link is active for 30 days.

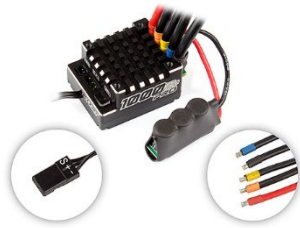
See the next page for hop-ups and support parts already available as of this date!

Already released: HOP-UP AND SUPPORT PARTS

UPC	Part No.	Description	MSRP
784695007550	755	WolfPack LiPo 4500mAh 35C 11.1V	\$111.99
784695270336	27033	Blackbox 1000Z+ Pro Sensored ESC	\$259.99
784695272033	27203	Reedy 1416-C2L Dual AC/DC Competition Balance Charger	\$313.99
784695720107	72010	DR10 FT Servo Mount Set, aluminum	\$9.99
784695720114	72011	DR10 FT Rear Hub Set, blue aluminum	\$40.99
784695720145	72014	DR10 FT Arm Mount Set, aluminum	\$42.99
784695913929	91392	FT Aluminum Steering Set, blue	\$24.99



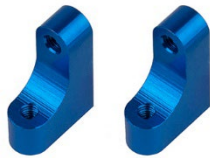
755



27033



27203



72010



72011



72014



91392